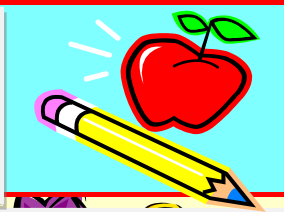


# 2010/11 SUPPLY LIST



St. Elizabeth Area Catholic  
School  
**Kindergarten/Young Fives  
Supply List**

**WELCOME TO  
KINDERGARTEN/YOUNG FIVES  
SCHOOL YEAR 2010/11**

## KINDERGARTEN/YOUNG FIVES

Mrs. Lisa Cameron

- ◇ Waterproof Book Bag - large enough to hold a 8 ½ x 11 folder
- ◇ Paint Shirt - large T-shirt with child's name on it
- ◇ 1 pair of tie tennis shoes for inside
- ◇ 1 small blanket or towel
- ◇ 1 small pillow - NO LARGER than 12"x16"
- ◇ 1 pencil case (plastic only supply box) 9"x6"
- ◇ 1 (one) complete change of clothing in a plastic bag with child's name on it (CHANGE)
- ◇ 1 box of crayons
- ◇ 1 dozen glue sticks
- ◇ 1 pair of Fiskar scissors
- ◇ 1 box of quart bags
- ◇ 1 box of gallon bags
- ◇ Winter an extra pair of gloves, hat, boots and snow pants
- ◇ 1 - 8 ½ x 11 Dry Erase Board with lines
- ◇ 1 dozen #2 pencils
- ◇ PLEASE LABEL EVERYTHING WITH CHILD'S NAME

### COMMUNICATION FROM SCHOOL TO HOME

Will be the Weekly School Newsletter sent home with your oldest child every WEDNESDAY.  
MAKE SURE TO CHECK THE BOOKBAG!!

or

**GO PAPERLESS!!**

Sign-up to receive your newsletter by e-mail  
e-mail address \_\_\_\_\_

## MAKE SURE TO CHECK OUR WEB SITE @

[www.steliz.net](http://www.steliz.net)

*Supplies go fast throughout the school year, so please make sure to check on your child's supply.  
Usually at Christmas Break supplies need to be replenished!*



### LUNCH INFORMATION

*Reese Public Schools in conjunction with Chartwells Food Service provide lunches daily to St. Elizabeth Area Catholic School.*

🍏 \$2.55 per day includes entrée of the day, salad bar & 1 milk (3 choices of main entrée)

🍏 Extra Milk .35 cents-white or chocolate or milk for sack lunch students

🍏 Extra Entrée \$1.05

🍏 Each student will have a lunch account – lunch statements will be sent home each Friday.

**BACK TO SCHOOL NIGHT IS THURSDAY,  
SEPTEMBER 2ND, 2010  
6:00 p.m. until 7:30 p.m.**

**FIRST DAY OF SCHOOL  
TUESDAY, SEPTEMBER 7TH  
7:55 A.M.  
DISMISSAL  
3:05 P.M.**

**YOUNG FIVES  
12:30 P.M.  
DISMISSAL  
3:05 P.M.**